

**20 dB, Bi-Directional Coupler,  
1 - 1000 MHz**

**CH-132  
V3**

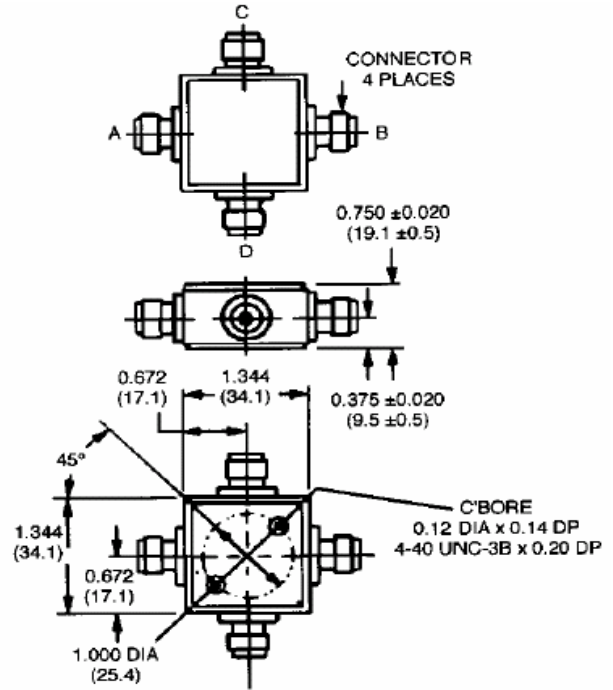
**Features**

- Broad Frequency Range
- Constant Coupling—Within  $\pm 0.5$  dB Max
- VSWR: 1.3:1 Max
- 

**Description**

Bi-Directional Couplers offer the ability to couple the power in two directions while maintaining directivity.

**C-8**



Dimensions in ( ) are in mm.  
Unless Otherwise Noted: .xxx =  $\pm 0.015$  (x =  $\pm 0.4$ )  
WEIGHT (APPROX.): 2.5 OUNCES 71 GRAMS

**Electrical Specifications<sup>1</sup>: T<sub>A</sub> = -55°C to +85°C**

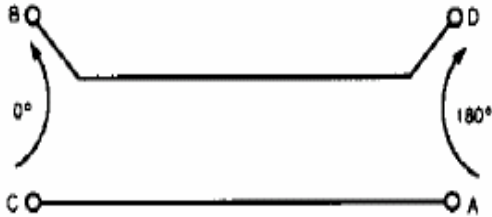
Parameter	Test Conditions	Frequency	Units	Min	Typ	Max
Coupling	Input to Output	1-1000 MHz	dB	19.0	20.0	21.0
Coupling Flatness	—	10 - 500 MHz	dB	—	—	$\pm 0.25$
		1 - 1000 MHz	dB	—	—	$\pm 0.5$
VSWR	All Ports	10 - 500 MHz	Ratio	—	—	1.2:1
		1 - 1000 MHz	Ratio	—	—	1.3:1
Directivity	Both Directions	10 - 500 MHz	dB	25	—	—
		1 - 1000 MHz	dB	20	—	—
Main Line Loss <sup>2</sup>	—	10 - 500 MHz	dB	—	—	0.5
		1 - 1000 MHz	dB	—	—	0.7

1. All specifications apply with 50 ohm source and load impedance.  
2. Includes theoretical power split.  
This product contains elements protected by United States Patent number 3,426,298.

**20 dB, Bi-Directional Coupler,  
1 - 1000 MHz**

**CH-132  
V3**

**Functional Diagram**



**Ordering Information**

Part Number	Package
CH-132 BNC	Connectorized
CH-132 N	Connectorized
CH-132 SMA	Connectorized
CH-132 TNC	Connectorized

**Typical Performance Curves**

